

**STEP 1**



**FIELD VERIFIED DIMENSIONS & ANIMAL SELECTION**

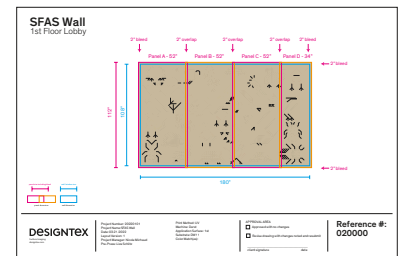
Installer needs to provide field verified dimensions, including site dimensions and location of any architectural elements so that the animals are displayed full. Review the image on the following page to determine if there are any animals that you would like to be included or not. Scale and color of the animals cannot be adjusted.

**STEP 2**

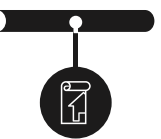


**LAYOUT** UP TO 2-3 BUSINESS DAYS

A layout will be provided using the animals selected to the field verified dimensions. Animals will be added to fill in any gaps. Your approval is a confirmation of size and graphic content. When the layout is approved, sign and return the layout to the project manager.

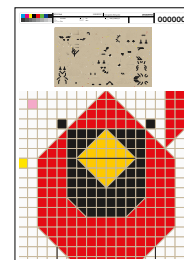


**STEP 3**



**STRIKE-OFF** UP TO 3-5 BUSINESS DAYS

With layout approval, the strike-off will go into production. A strike-off is a printed area of the final artwork at 100% scale on the wallcovering being ordered. When the strike-off is approved, email the project manager noting your approval and the strike-off number.



**STEP 4**



**ORDER** UP TO 1-3 BUSINESS DAYS

To process the order, the following are needed:

- Approved Layout
- Approved Strike-off
- Purchase Order or Order Form

**STEP 5**



**PRODUCTION** PROJECT MANAGER WILL CONFIRM PRODUCTION TIMING

The order will be released to production and a ship date will be provided once payment has been resolved. This is dependent upon your credit terms. Keep our team apprised of any hard install dates.

