

Tailor

3163

100% Polyurethane (Polycarbonate Based)

Upholstery


Product specification

Name	Tailor
Number	3163
Product Category	Upholstery
Material Type	Coated
Content	100% Polyurethane (Polycarbonate Based)
Finish	Advanced Protective Topcoat
Backing	Knit, Polyester
Width	52 inches (132 cm)
Weight	24.00 ounces/linear yard (744 grams/linear meter)
Average Bolt Size	20 yards
Shown Railroaded	No
Origin	South Korea
Warranty	5 years
Introduction Date	12/17/2020

Design

Pattern Type	Dot, Emboss, Geometric
Pattern Scale	Small
Repeat	V 1.25 inches x H 1.25 inches (V 3.18 cm x H 3.18 cm)

Performance

Abrasion	100,000 Wyzenbeek double rubs
Flammability	CA TB 117-2013
Lightfastness	200 hours
Performance Standards	
Cleaning Code	Denim Dye Resistant, Ink Resistant, Water- based/Solvent (WS)
Approved Disinfectants	Bleach 4:1 3M™HB Quat Disinfectant Cleaner Concentrate25 Accel® TB Accel® TB Wipes Clorox Commercial Solutions® Hydrogen Peroxide Cleaner Disinfectant Clorox Healthcare® Bleach Germicidal Cleaner Clorox Healthcare® Bleach Germicidal Wipes Clorox Healthcare® EZ- KILL® Quat Alcohol Cleaner Disinfectant Wipes Clorox Healthcare® Hydrogen Peroxide Cleaner Disinfectant Clorox Healthcare® Hydrogen Peroxide Cleaner Disinfectant Wipes Clorox® Disinfecting Wipes Isopropyl Alcohol, 70% Lysol® Disinfectant Spray Neutral Disinfectant Cleaner Oxivir® 1 Oxivir® 1 Wipes Oxivir® Tb Oxivir® Tb Wipes

OxyCide™ Daily
Disinfectant Cleaner
Perisept
Sani-Cloth® AF3
Germicidal Disposable
Wipes
Sani-Cloth® Bleach
Germicidal Disposable
Wipes
Sani-Cloth® Plus
Germicidal Disposable
Cloth
Super Sani-Cloth®
Germicidal Disposable
Wipes
Virex® II 256
Virex® Tb
Wex-Cide 128

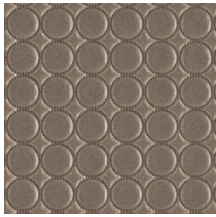
Sustainability

Certifications & Programs

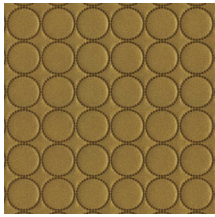
Greenguard Gold, Healthier
Hospitals, HPD, LBC Red
List Compliant, LEED,
Mindful Materials, No Prop
65 Chemicals, WELL

Material Health

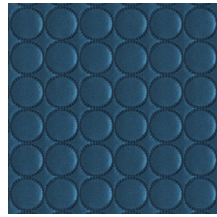
Low VOC, No
Antimicrobials, No Flame
Retardants, No PFAS, No
PVC



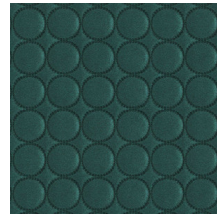
Nickel
3163-101



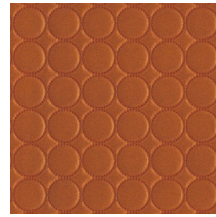
Gold
3163-201



Sapphire
3163-401



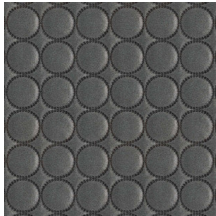
Spruce
3163-501



Penny
3163-701



Snow
3163-801



Graphite
3163-802