

Ribbon

9536

100% Polyurethane (Polycarbonate Based)

Upholstery


Product specification

Name	Ribbon
Number	9536
Product Category	Upholstery
Material Type	Coated
Content	100% Polyurethane (Polycarbonate Based)
Finish	Advanced Protective Topcoat
Backing	Polyester (without Antimony), Woven
Width	54 inches (137 cm)
Weight	24.50 ounces/linear yard (760 grams/linear meter)
Average Bolt Size	30 yards
Shown Railroaded	No
Origin	China
Warranty	5 years
Introduction Date	11/15/2024

Design

Designer	Sophie Smallhorn
Pattern Type	Geometric
Pattern Scale	Large
Repeat	V 58.00 inches x H 54.00 inches (V 147.32 cm x H 137.16 cm)

Performance

Abrasion	800,000 Wyzenbeek double rubs
Flammability	CA TB 117-2013
Lightfastness	200 hours
Performance Standards	 CFFA-Healthcare-201
Cleaning Code	Denim Dye Resistant, Ink Resistant, Water- based/Solvent (WS)
Approved Disinfectants	Bleach 10:1 3M™ C. diff Solution Tablets Accel® PREvention™ Wipes CaviCide™ CaviWipes™ Clorox Commercial Solutions® Hydrogen Peroxide Cleaner Disinfectant Clorox Healthcare® Bleach Germicidal Cleaner Clorox Healthcare® Bleach Germicidal Wipes Clorox Healthcare® Hydrogen Peroxide Cleaner Disinfectant Clorox Healthcare® Hydrogen Peroxide Cleaner Disinfectant Wipes Clorox® Disinfecting Wipes Dispatch® Hospital Disinfectant Towels with Bleach Isopropyl Alcohol, 70% Oxivir® 1 Oxivir® 1 Wipes Oxivir® Five 16 Oxivir® Tb Oxivir® Tb Wipes

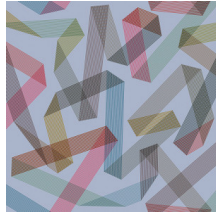
OxyCide™ Daily
Disinfectant Cleaner
Sani-Cloth® AF3
Germicidal Disposable
Wipes
Sani-Cloth® Bleach
Germicidal Disposable
Wipes
Sani-Cloth® HB Germicidal
Disposable Wipes
Sani-Cloth® Prime
Germicidal Disposable
Cloth
Super Sani-Cloth®
Germicidal Disposable
Wipes
Virex® II 256
Virex® Plus
Virox™ 5
Wex-Cide 128

Sustainability

Certifications & Programs	Greenguard Gold, Healthier Hospitals, HPD, LBC Red List Compliant, LEED, Mindful Materials, No Prop 65 Chemicals, WELL
Material Health	Low VOC, No Antimicrobials, No Flame Retardants, No PFAS, No PVC



Pale
9536-001



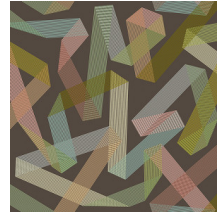
Blue
9536-002



Pink
9536-003



Navy
9536-004



Grey
9536-005