

Hatchmark

3761

25% Nylon (Solution Dyed), 75% Polyester (Preconsumer Recycled)

Upholstery


Product specification

| | |
|--|---|
| Name | Hatchmark |
| Number | 3761 |
| Product Category | Upholstery |
| Material Type | Woven |
| Content | 25% Nylon (Solution Dyed), 75% Polyester (Preconsumer Recycled) |
| Finish | Stain Resistant (without PFAS) |
| Backing | Acrylic |
| Width | 54 inches (137 cm) |
| Weight | 20.00 ounces/linear yard (620 grams/linear meter) |
| Average Bolt Size | 60 yards |
| Shown Railroaded | No |
| Origin | United States |
| Warranty | 3 years |
| Introduction Date | 06/17/2016 |
| Optional Added Finish (Upcharge Applies) | Stain Resistant (without PFAS) |
| Optional Added Backing (Upcharge Applies) | Fluid Barrier, Heavy Acrylic Backing, Medium Acrylic Backing |

Design

| | |
|---------------|---|
| Designer | West Elm |
| Collection | West Elm |
| Pattern Type | Organic, Texture |
| Pattern Scale | Medium |
| Repeat | V 33.00 inches x H 27.50 inches (V 83.82 cm x H 69.85 cm) |

Performance

| | |
|------------------------|---|
| Abrasion | 100,000 Wyzenbeek double rubs |
| Flammability | CA TB 117-2013 |
| Lightfastness | 40 hours |
| Performance Standards |  |
| Cleaning Code | Water-based/Solvent (WS) |
| Approved Disinfectants | <p>Bleach 10:1</p> <p>Isopropyl Alcohol, 70%</p> <p>Lysol® All-Purpose Cleaner</p> <p>Lysol® Disinfectant Spray</p> <p>Lysol® Disinfecting Wipes (all scents)</p> <p>Oxivir® 1</p> <p>Oxivir® 1 Wipes</p> <p>Oxivir® Tb</p> <p>Oxivir® Tb Wipes</p> <p>OxyCide™ Daily Disinfectant Cleaner</p> <p>Sani-Cloth® AF3 Germicidal Disposable Wipes</p> <p>Sani-Cloth® Bleach Germicidal Disposable Wipes</p> <p>Super Sani-Cloth® Germicidal Disposable Wipes</p> <p>Virex® II 256</p> |

Sustainability

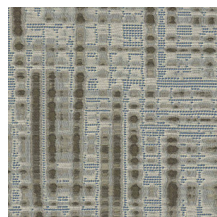
| | |
|---------------------------|--|
| Certifications & Programs | Healthier Hospitals, HPD, LBC Red List Compliant, LEED, Mindful Materials, No Prop 65 Chemicals, SCS Indoor Advantage Gold |
| Material Health | Low VOC, No Antimicrobials, No Flame Retardants, No PFAS |



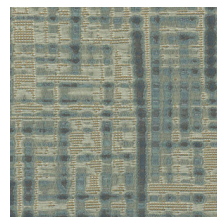
Creme
3761-101



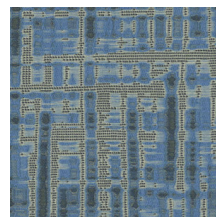
Toast
3761-102



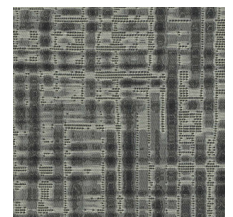
Stucco
3761-103



Water
3761-401



Cornflower
3761-402



Graphite
3761-801